

KENT LOCAL CHILDREN'S PARTNERSHIP GROUPS

PURPOSE

Local Children's Partnership Groups (LCPGs) ensure a consistent approach to partnership working at district level across Kent. They provide a connection between countywide strategic bodies and those working with children and young people at a local level.

LCPGs' primary purpose is to drive improvement in specific **outcomes** for local children and young people. The work of each LCPG should be highly-focussed, data-driven and underpinned at all times by delivering a measurable improvement in selected **indicators**. The activity of the group will include:

- Sharing information to provide understanding of local services and their thresholds
- Providing a vehicle for identifying and addressing local needs and gaps in service provision
- Facilitating and pooling resources to meet the needs of local children and families.

The work of LCPGs will support both the development and delivery of **Kent's Children and Young People's Plan** which will be aligned to aims and ambitions of the **Children's Health and Wellbeing Board (CHWB)**.

LCPGs play a key role in relation to **safeguarding** and promoting the welfare of children and young people, and as such provide an important link between the **Kent Safeguarding Children Board (KSCB)** and local services and organisations working with children and young people.

OUTCOMES & INDICATORS OF SUCCESS

The key driver of the activity of LCPGs will be the new countywide **Children and Young People's Plan (CYPP)** which will clearly set out the most important **outcomes** and associated **indicators** for children and young people in Kent. LCPGs will be key contributors to the plan's development, which will take place in parallel to the evolution of these groups. The new CYPP is due to be published in April 2016.

The selection of outcomes and indicators in the CYPP will be informed by **local knowledge**, statistical **data** and the views of **children and young people**. Each LCPG is expected to focus on improving the outcomes in the CYPP and progress will be measured in each district using the associated indicators.

A **dashboard** will be put together for each district containing data for all of the indicators in the CYPP. Dashboards will allow LCPGs to track their progress and will also be used to report to the CHWB. They will highlight areas where progress is required as well as evidencing positive impacts of the group's work. The CHWB will receive a countywide CYPP Dashboard which will highlight concerns and achievements from individual districts.

In addition to the CYPP, each LCPG may have its own agreed set of **local indicators** which contribute to the CYPP Outcomes and are tailored to the particular needs of children and young people in the local area. Because of the LCPGs' extensive contribution to the CYPP, it is hoped that the need for additional local indicators will be reduced.

GROUP MEMBERSHIP

Each LCPG should represent a wide range of partners from across the public and voluntary sectors who work with children within the district. It is expected that each district's LCPG will be representative of the entirety of their district area. It is expected that the following **Core Members** should be represented within each LCPG.

District Council	Local Schools & FE Colleges	Social Care
CCG	Early Years Provider	Early Help
Voluntary Sector	Police	Children's Commissioning
Public Health	Housing	Education

Each LCPG should also invite the KCC Local Member and the District Councillor with lead responsibility for children to become members of the group.

As well as the Core Members, each LCPG can invite relevant **Additional Members** to join the group. Individual LCPGs have discretion over local Additional Members, and these do not need to be consistent across the twelve districts.

It is expected that all LCPG members will support the group in a way which reflects their organisation's responsibilities and resources by:

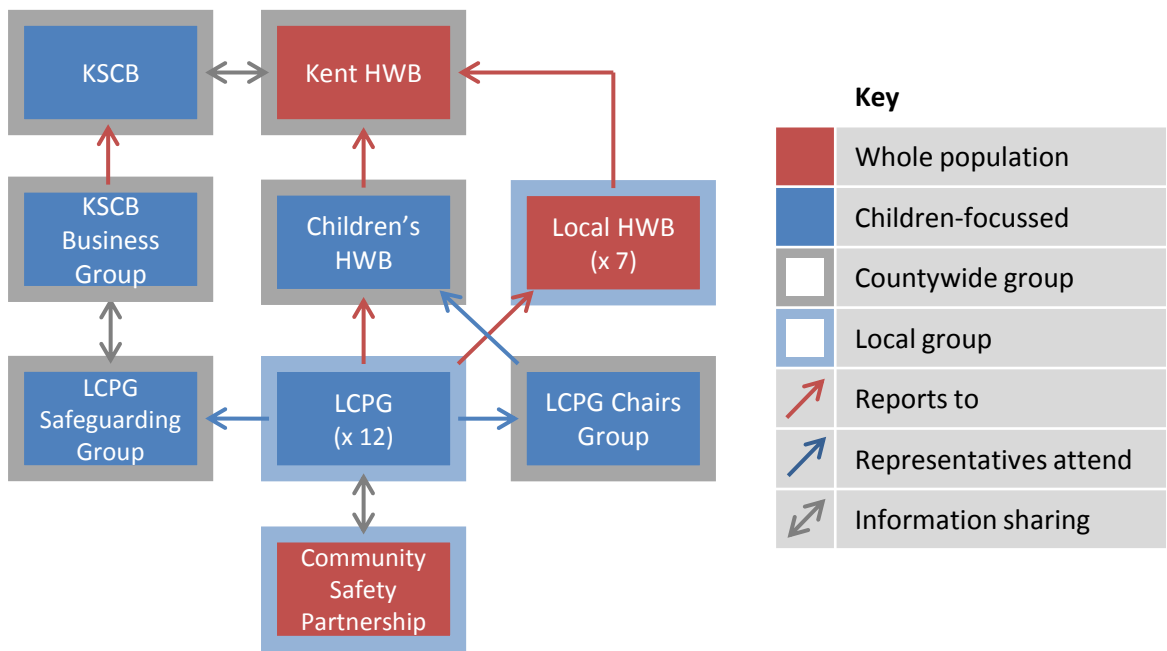
- Attending or being represented at every meeting;
- Responding to actions in a timely way as agreed by the group;
- Sharing data that supports the delivery of the group's priorities.

GROUP ROLES

To support consistency between the groups, there is an expectation that each LCPG will ensure the following specific roles are fulfilled:

- **CHAIR:** Each LCPG will nominate or elect a chair from amongst its members (either core or additional members). The **core purpose** of this role is to ensure the group remains focused on improving outcomes for children and young people in their district identified in the CYPP (as well as any local indicators). In addition to district LCPG meetings, there is an expectation that the twelve chairs will meet as a group to support and co-ordinate partnership working across districts.
- **CO-ORDINATOR:** Each LCPG will also nominate a Co-ordinator who will work alongside the Chair to maintain a clear focus on improving outcomes for children and young people, and ensure the smooth-running of the group.
- **SAFEGUARDING LEAD:** Each LCPG should include within its membership the existing **District Council Safeguarding Lead** who will ensure the promotion of safeguarding within the group's work to improve outcomes. The Safeguarding Leads from the twelve districts will continue to meet as a group (**LCPG Safeguarding Group**) which will be supported by the KSCB Programme and Performance Manager. This group will link to the KSCB, ensuring accurately and timely sharing of information.
- **LOCAL HWB LINK:** A nominated group member will attend Local Health and Wellbeing Board meetings and ensure communication and joint working between the two groups. It is likely that overlap in membership of these groups will already exist.

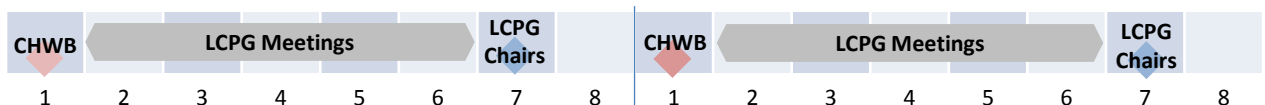
GOVERNANCE



- Local Children's Partnership Groups (LCPGs) report to the countywide **Children's Health and Wellbeing Board (CHWB)**. The Children's HWB is the county's principal partnership group that brings partner agencies together to improve outcomes for children and young people.
- LCPGs also report to the **Local Health and Wellbeing Board** in their area. There are seven Local HWBs which are associated to CCG areas, therefore some LCPGs will be linked to more than one Local HWB. Reporting arrangements should be agreed at a local level accordingly.
- The chair of each LCPG will be a member of the **LCPG Chairs Group**. Two members of the LCPG Chairs Group will attend each meeting of the CHWB providing communication between the CHWB and the twelve LCPGs.
- Similarly, the Safeguarding Leads from each LCPG will attend the **LCPG Safeguarding Group**, which will feed into the KSCB through the KSCB Business Group.
- There is an expectation that the LCPG will develop and maintain links with the **Community Safety Partnership** and ensure that information is shared and joint working is encouraged.

MEETING ARRANGEMENTS

- The CHWB meets every two months. Minutes from the CHWB will be shared with the LCPG Chairs.
- It is expected that each **LCPG** will meet **every two months** (six times a year), in the weeks following the CHWB so that key messages from the CHWB can be communicated and discussed at district level.
- The **LCPG Chairs Group** will also meet as a group **every two months**, after all of the twelve LCPGs and before the next CHWB.
- This suggests an approximate eight week (two month) cycle of meetings as demonstrated below:



All LCPG member organisations are expected to contribute as appropriate to co-ordination, administration and meeting venues to ensure the smooth running of LCPG and associated meetings.